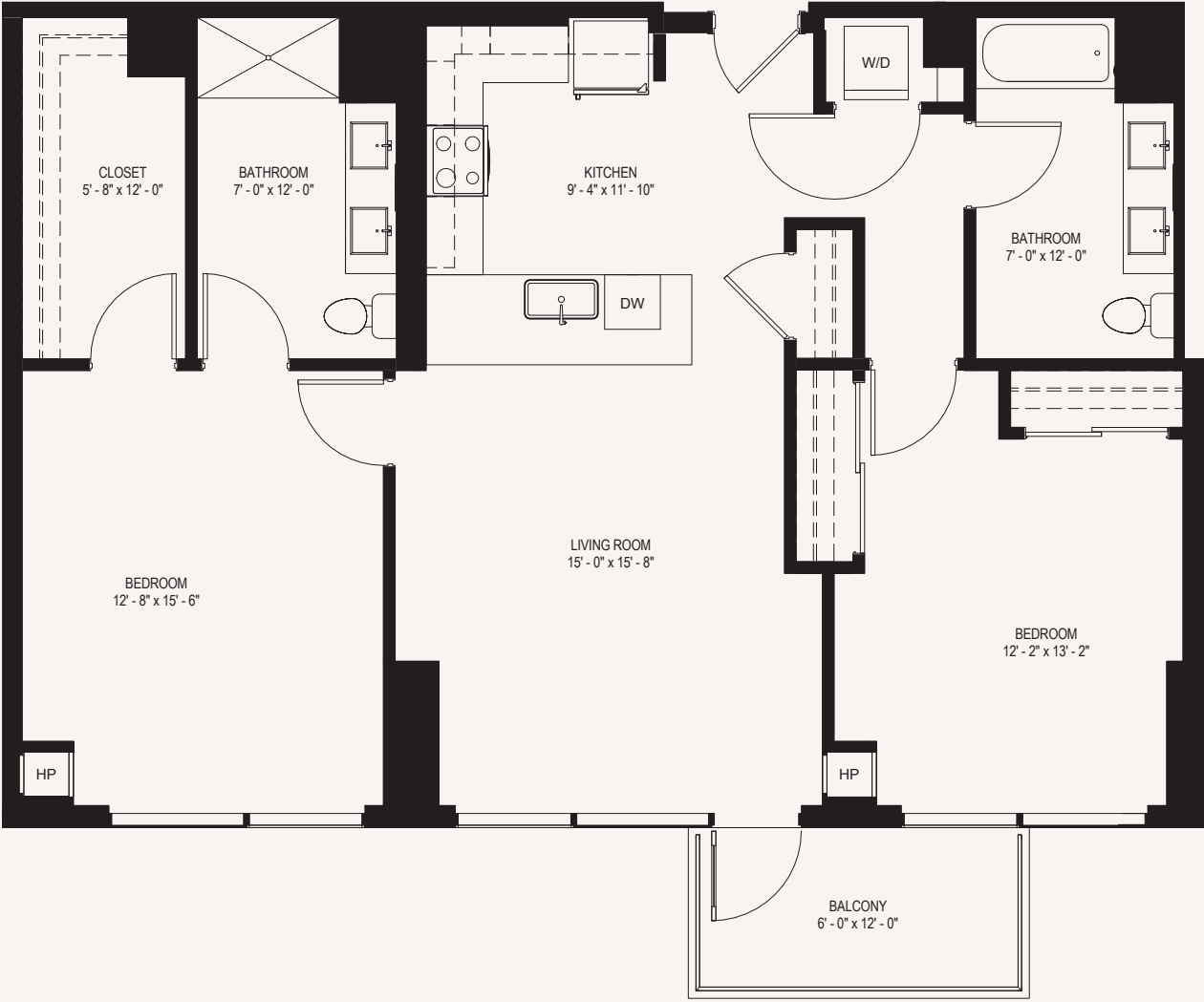


NICHE 905

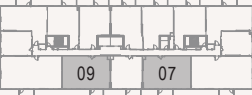
PLAN 2B

2 BED 2 BATH 1,202 SQ FT



KEY PLAN N»

Floors 15-17



* unique to this plan

Plans, views, dimensions and details subject to change. All dimensions are approximate.

APARTMENT HIGHLIGHTS

- Large walk-in closet* with glass tile backsplashes
- Breakfast bar* · Luxurious porcelain tiled bathrooms
- Large balcony with East-facing balcony for amazing city skyline views* · Two master bathrooms with dual vanity sinks*
- Thoughtfully designed floorplans · Washer and dryer
- Contemporary cabinetry with soft-close doors and drawers and built-in wine racks · Luxury plank flooring throughout
- Stainless steel appliances with ice maker and gas range · Floor to ceiling windows
- Dishwasher and microwave · Individually controlled heating and cooling
- Quartz kitchen countertops · Roller shade window treatments

BUILDING FEATURES

- Rooftop pool and spa
- Spacious entertainment room
- Outdoor bar and grilling stations
- 24/7 Front desk concierge stations
- On-site dog run and pet grooming area
- Skydeck lounge with large fire-pit
- Community garden
- Amazing 360° city views
- Bike workshop and 110-bike storage area
- Fitness center & yoga studio
- LEED certification
- Fully equipped business center with conference room
- Indoor parking
- Wi-Fi in common areas
- Gigabit internet ready
- Complimentary coffee bar

